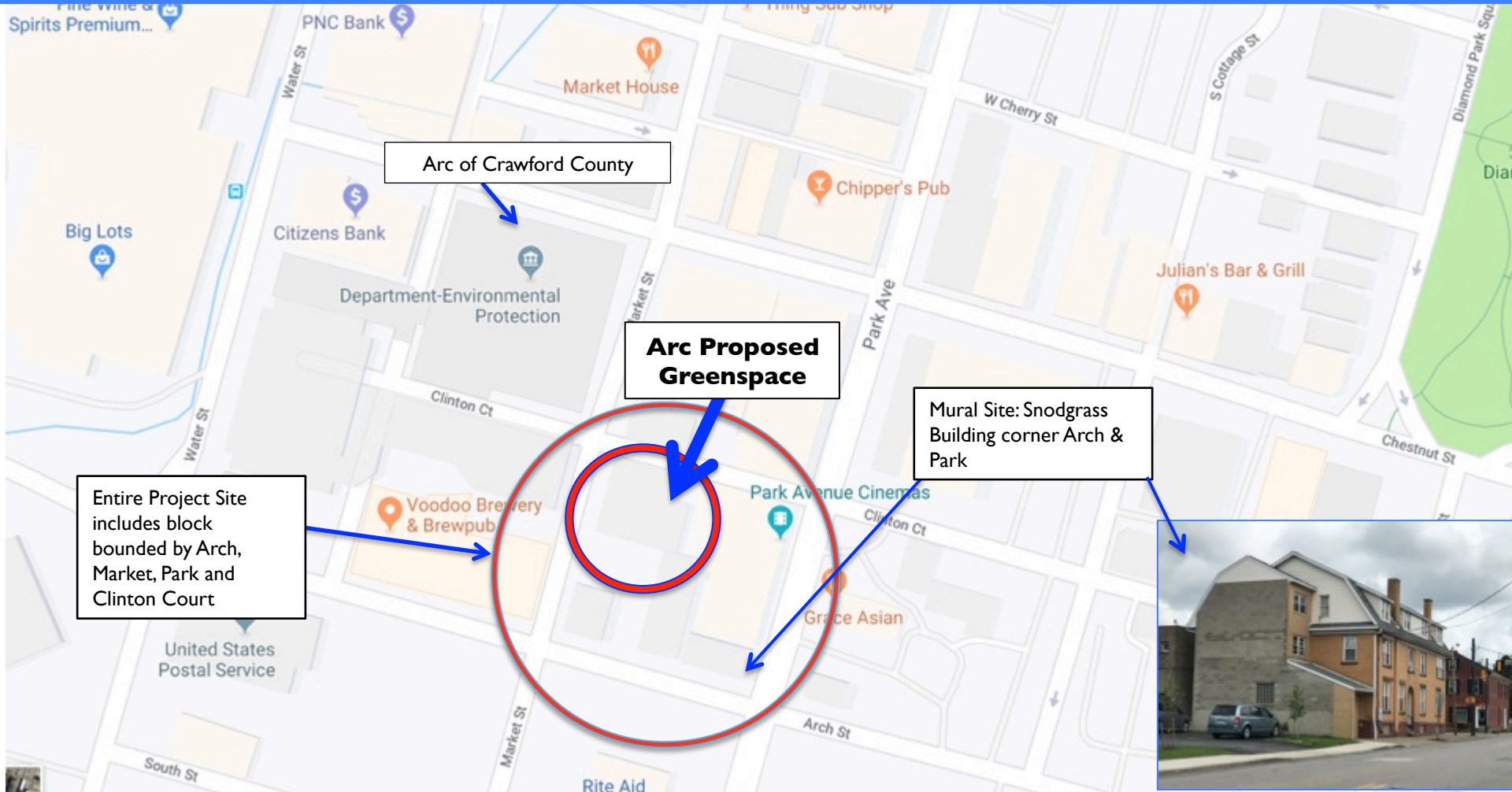


Arc Greenspace Site



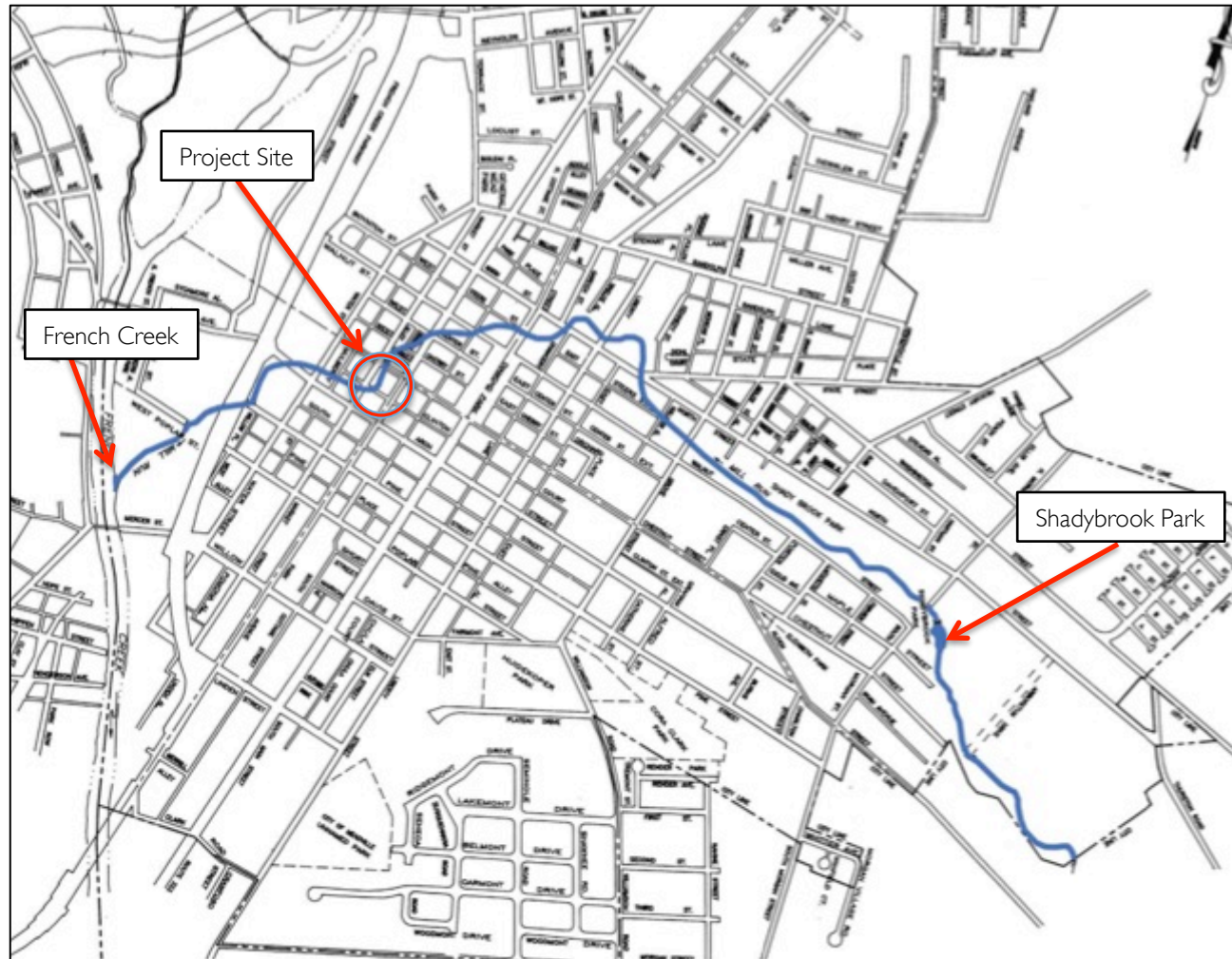
Located on the southeast corner of Market and Arch Streets, and running north to Clinton Court. Currently bounded by the Park Ave Cinema to the west edge of the site.

Project Site in Context of Downtown Business District



The project site is just south of Chestnut Street, the main artery for the downtown business district. Due to the height and shape of the Snodgrass Building, the proposed mural will be visible from the Arch Street gateway into Meadville, four blocks away (past Water Street on this map).

Mill Run through the City of Meadville



Mill Run flows beneath most streets through the central part of the City, but surfaces above ground briefly at several key points from the headwaters above Shadybrook Park to the confluence of French Creek.

Portion of Project Site from Intersection of Arch & Market Streets



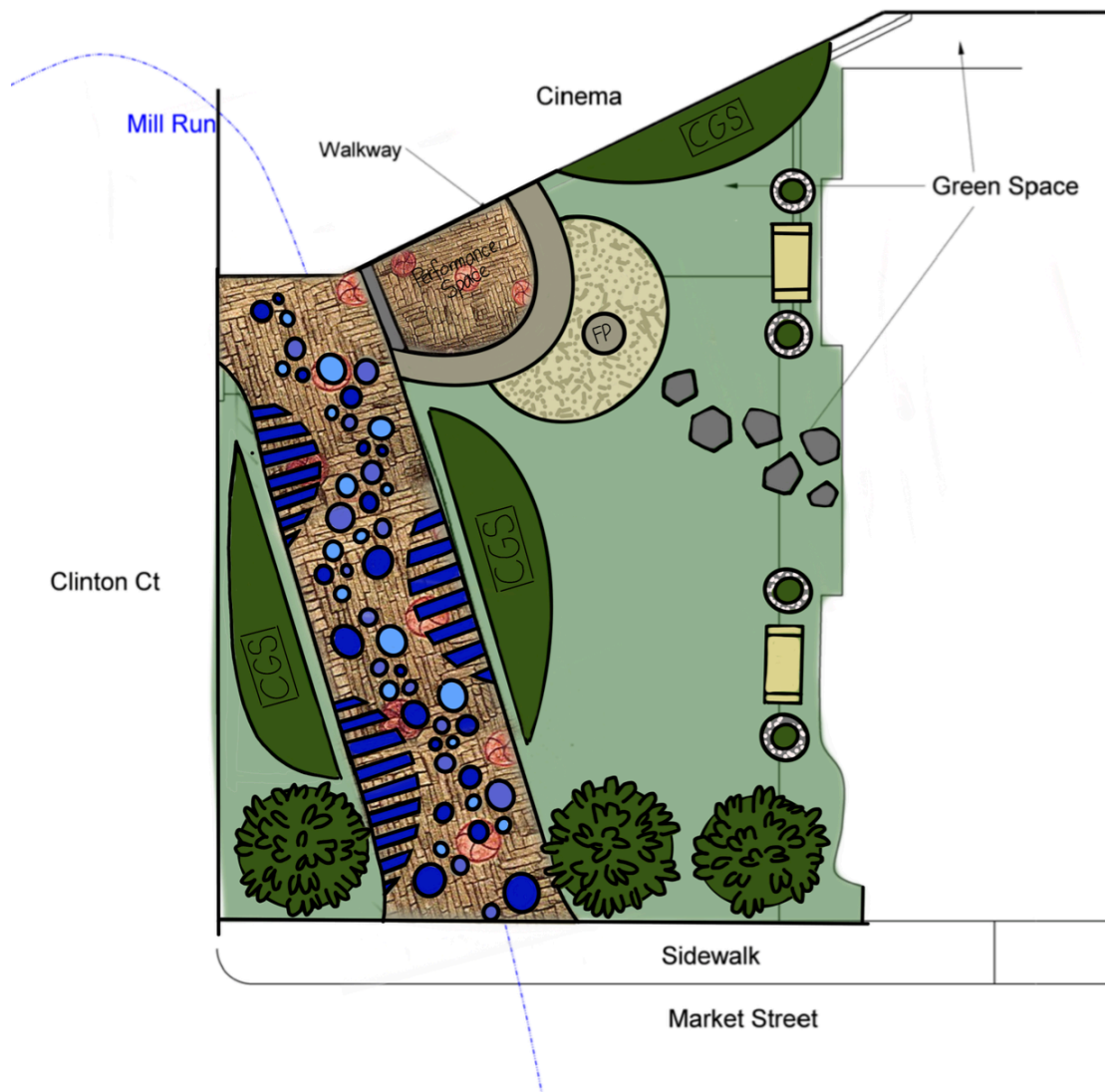
The parking lot here is owned by the Arc of Crawford County and will provide overflow space for weekend arts-engagement events that will be planned for the proposed greenspace.

Project Site from Intersection of Market Street & Clinton Court



Fenced-off area shows a portion of the Greenspace that is adjacent to the Snodgrass Mural site. As noted in LOI, removal of concrete slab (original floor of building) has begun. Mill Run flows beneath the remaining concrete above.

Preliminary Concept Plan Arc Greenspace



The adjacent image reflects the general concepts for the proposed Greenspace. All concrete on either side of Mill Run was removed in the spring of 2019. The designated greenspace closest to Clinton Court will be developed in Spring 2020. Workshops planned for February 2020 will explore options for daylighting small sections over the stream. This will create openings through the concrete over the stream; the steel structural steel beams will remain in place providing opportunities to 'float' sculptures over the openings. Painting the remaining concrete to further highlight the presence of the stream will also be explored. If the cinema is removed the overall shape of the site may change, offering an opportunity to emphasize a remnant of the early Mill Run Canal, which played an important role in the Meadville's early development.

Snodgrass Building: SW Wall



Meadville Medical Center: *The Spirit of Birches, Birds and Words*



This public mural at Meadville Medical Center's Medical Arts Building creates a pleasant, contemplative space for patients as they transition from the MMC parking lot to the entrance of the hospital and doctor's offices. The mural was designed and painted by Art & Environment apprentices (Nayana Pratt '19 and Gretchen Wood '19) and A&EI director Amara Geffen in 2017. The use of a strong background color with simple forms that incorporates poetry has inspired our thinking about the Snodgrass Mural.



Preliminary Ideas Integrated 1st Run: flowers and forms cut from metal



Our plan is to paint the Snodgrass wall with a strong color and develop one to two large metal cutouts that will be attached to the building and 'hold' the wall. One idea for the mural is to bring the flowers concept found at the PennDOT project site into downtown Meadville.

Additional Work Samples
Art & Environment Initiative
Lead Artist: Amara Geffen

Read Between the Signs: Meadville, Pennsylvania



Read Between the Signs is a 1,200' x 9' relief constructed from reclaimed road signs between 2001-10. Together with *Signs & Flowers*, these projects beautify the gateway into Meadville, reflecting community pride and providing an anecdote to the "geography of nowhere."



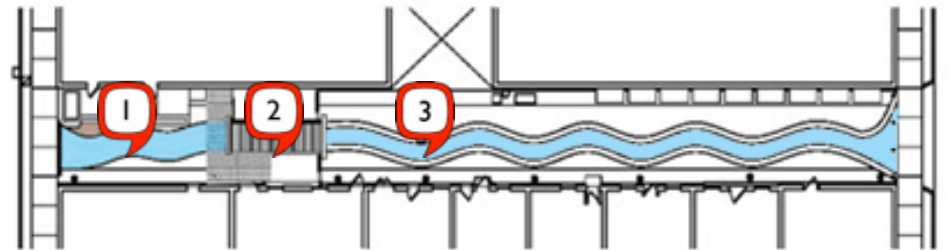
Read Between the Signs: Engaging Local Youth in Meadville, Pennsylvania



More than 1000 local school children provided visual ideas, for this signart relief, celebrating what they value most about living in Meadville and resulting in a collective cognitive map of their community. Their drawings were reinterpreted and integrated into this roadside relief sculpture.



Market Alley: Meadville, Pennsylvania



1 Brick Pathway 2 Steam Daylighting 3 Brick Pathway

Located in the central business district, adjacent to Meadville's historic Market House, Market Alley was the City's first project to daylight a section of Mill Run. Designed by Amara Geffen and a team of Allegheny apprentices, the project features a new footbridge over Mill Run providing partial stream daylighting, improved lighting along the alley, and a resurfaced roadway suggestive of a meandering stream. At the east end of the alley, on Park Ave, is a community mural developed by A&EI apprentice Berry Breene; the Meadville Market House is situated on the west side of Market Alley.

Shadybrook Park: Meadville, Pennsylvania

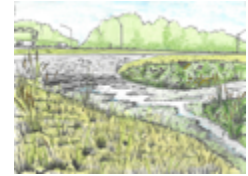


Completed in 2010-11, this collaboration with the City of Meadville included revitalization of a historical park through murals, trail development, and stormwater enhancements resulting in a more useable park. Local youth provided design ideas for outhouse murals, implemented by A&EI apprentices.



Informational/educational panels

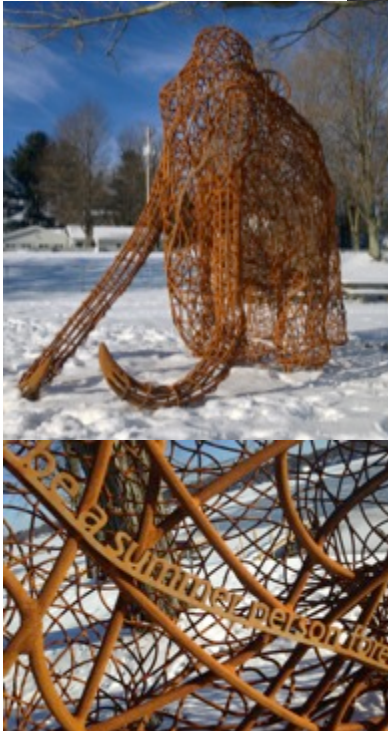
In Praise of Land & Water: Revisioning Stormwater on Federal Highways



In Praise of Land & Water was developed by artists Amara Geffen and Angelo Ciotti, landscape architect Chris Brown, and environmental engineer Steve Halmi in collaboration with PennDOT. Located on I79 at the Meadville Interchange, ecoart strategies were used to create natural systems to slow runoff, improve water quality, and model material reuse.

Ganesh: A Mammoth for Fireman's Beach, Conneaut Lake, PA

Fabricated in 2016, this life-size woolly mammoth was created as part of an Our Town project. Excerpts from stories shared by the community are woven throughout the sculpture.



Why a sculpture of a mammoth at this location? Well, mammoth bones were found in the lake and members of the Conneaut Lake Development Corporation wanted to honor that history in some way. *Ganesh* was fabricated as part of the NEA OurTown project administered by Amara Geffen between 2014 – 2016. Four arts-engagement events were held during which community stories about living on the lake were gathered. Another sculpture, using more of the stories, is planned as soon as funds can be located. A timelapse video of fabrication and WJET-TV's news report of installation of *Ganesh* can be found on A&E's Facebook page at:

<https://www.facebook.com/pg/Art-Environment-Initiative-201453756671735/videos/>